

# PPLE Alumni Network

Joint Proposal for  
Establishing Alumni Structures for PPLE



# Table of Contents

<b>1. Purpose of the Alumni Network</b>	
a. Introduction	1
b. Goals	1
c. Benefits for all parties involved	1-2
d. Differences to existing structures	3
<b>2. Structure overview</b>	
a. Organogram of Structure	4
b. Alumni Network Board (ANB)	5
c. ANB Establishment as AIM Body	5
d. Justification of ANB Set-Up	6
e. AIM Alumni Committee	6
f. Preparatory Group	6
<b>3. Timeline</b>	7
<b>Appendix</b>	8

Contactpersons AIM Board: Lukrecija Neverovskaja ([external@aimpple.nl](mailto:external@aimpple.nl));  
Neira Dziho ([chair@aimpple.nl](mailto:chair@aimpple.nl))

Contactperson FSR-FDR: Robert Lange ([robert.fsr.fdr@gmail.com](mailto:robert.fsr.fdr@gmail.com))

# 1.

# Purpose of the Alumni Network

## I INTRODUCTION

PPLE is known for its small-scale community of students who aim to find interdisciplinary solutions to different societal problems. With a diverse pool of students in the program, there is a need to continue the growth of such a community after graduation. To support the opportunities both PPLE alumni and students can attain, the main goal of the Alumni Network is to connect both PPLE students and graduates through various social and career-related events. Using social media and an Online Network for the Alumni Network will allow to keep track of the community and its engagement. Therefore, our proposed structure includes an Alumni Network Board, who would facilitate and build the network itself, and an Alumni Committee, who would utilize the network to create events and projects. We have chosen to design this Network in collaboration between AIM and Student Council in order to enhance the representation of students' interests and maximize resources.

## I GOALS

- Creation of a PPLE Online Alumni Network
- Creation of the Alumni Network Board coordinating the network
- Creation of the AIM Alumni Committee to plan social events/projects

## I BENEFITS FOR THE PARTIES INVOLVED

### Benefits for the PPLE Student Body

During their studies, PPLE stands out through its close-knit community of highly motivated students. After graduating, PPLE students will continue their studies in further programs or enter the workforce. The purpose of a PPLE Alumni Network is to extend this to a life-long PPLE community that connects alumni beyond their studies. Such community allows graduates to benefit from fellow alumni on similar career itineraries when informing themselves about further studies, organizations, companies, and more. This is of particular relevance as they can draw from a community with whom they share a unique interdisciplinary background. Additionally, PPLE graduates can easily find people with a similar background for their own projects.

### **Benefits for the PPLE Program**

For the PPLE program, the introduction of a prestigious alumni network increases the attractiveness of the program. Looking at other selective programs in for example the USA or UK, the establishment of such alumni networks is a common practice and contributes to the status and reputation of the schools. Furthermore, an institutionalized ‘life-long’ PPLE community facilitates the alumni relations between PPLE and their graduates. This allows for instance for better outreach, planning of events, and referral of graduates.

### **Benefits for AIM Study Association**

AIM is at the heart of PPLE students’ social and extracurricular activities - it is a highly integrated organization that students of all years often turn to in order to expand their existing academic endeavors. Moreover, AIM has been approached by students on multiple occasions in regards to whether an Alumni Network exists or is in the works. Additionally, the idea of creating Committees in the themes of career or post-PPLE interests has always gained attention from students. In other words, AIM members’ interest in an Alumni Network is already visible. AIM as an association would additionally benefit from the Alumni Network by attracting and maintaining further engagement from second, third, and fourth year students for whom life after PPLE graduation becomes an increasingly important topic. Due to its integral role in the experience of PPLE students, AIM’s facilitatory function within the Alumni Network would grant high exposure to the project for prospective and current PPLE alumni.

### **Law Faculty Student Council**

The PPLE section of the Law Faculty Student Council (FSR-FDR) is elected to represent the interest of the PPLE students at the faculty level. The creation of an Alumni Network is a concern that was voiced by many students and adds to the PPLE student welfare. In the process of establishing, overseeing, and maintaining the PPLE Alumni Network, the concern of the FSR is to ensure that the network is designed according to the interest of all students. Thus, being a stakeholder in the Alumni Network Board allows representatives to shape the network accordingly. Furthermore, the position of the Council, acting on the faculty level, allows ensuring that the network is embedded into existing faculty and university structures.

## **I DIFFERENCES TO EXCISTING STRUCTURES**

### **Difference to PPLE Offers for Alumni**

Currently, PPLE provides social media groups for Alumni on Facebook and LinkedIn. However, this solution has several deficits compared to a central PPLE Alumni network: Currently, it is still possible to find alumni due to the small number of graduated years. However, with PPLE becoming more established and its number of graduates increasing, a system with adequate filter and connection features is necessary to facilitate alumni networking. Furthermore, the existing alumni groups are fragmented, with not only multiple platforms but also particular groups for PPLE majors. The fragmentation contributes to the current lack of overview. Moreover, the PPLE Alumni Board allows students themselves to design the Alumni structure and adjust it to be of best use. This allows, also, for more engagement through the direct involvement of AIM and the FSR, who can utilize the platform to host events with current students and alumni.

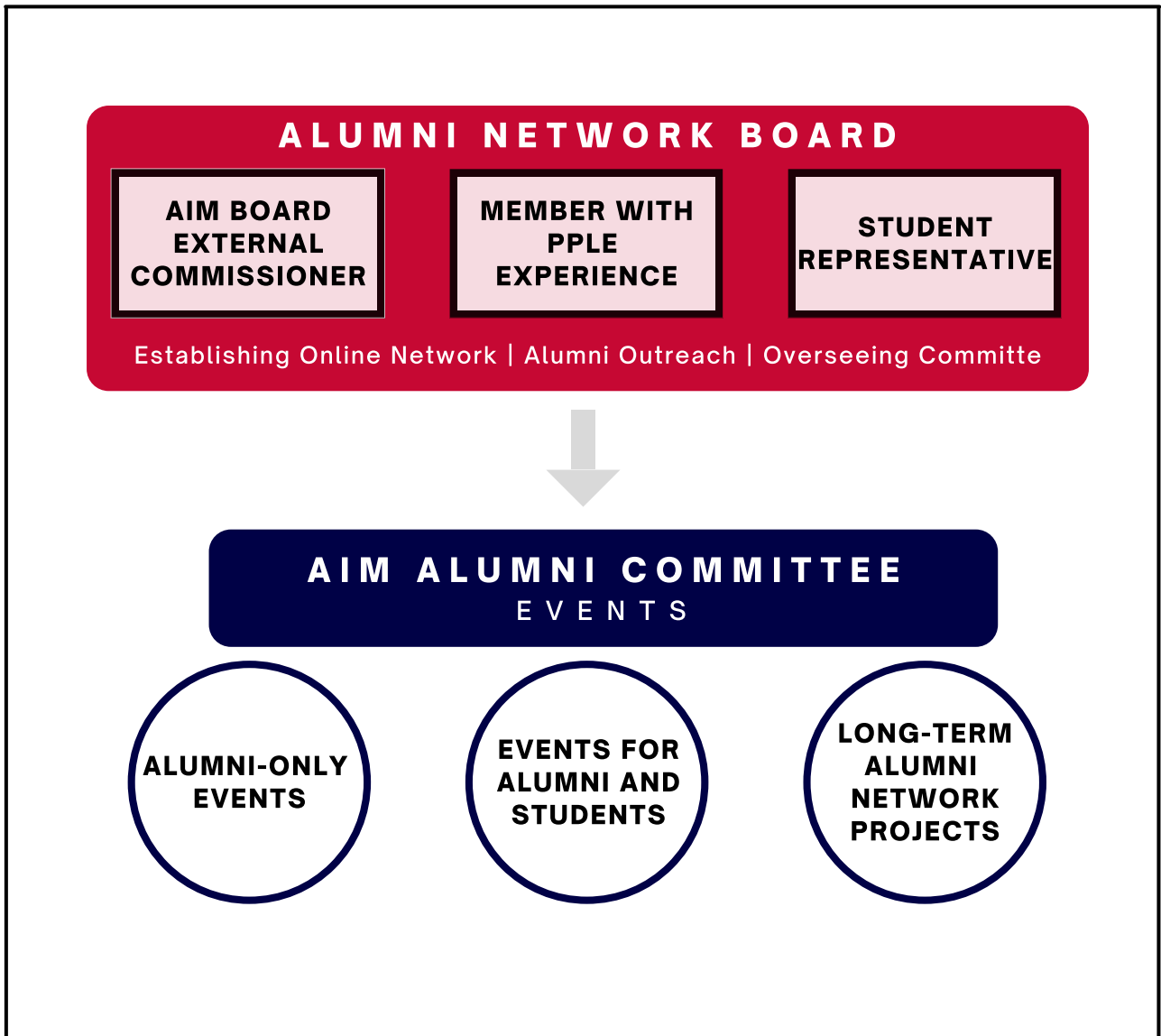
### **Difference to UvA Offers for Alumni**

Additionally to the social media groups by PPLE, the UvA provides with the 'UvA Bridge' a general alumni platform for UvA students hosted by the provider 'HyveBrite'. Even though the platform theoretically aims for similar goals as we propose here, it falls short due to two reasons. First of all, the platform is not established and rather inactive. Currently, the network comprises UvA-wide merely 177 registered users, five groups and 31 articles. All laid out benefits of an alumni network presuppose a network that includes a large number of users and interaction with the platform which are both not given with the 'UvA Bridge'. Secondly, there are significant benefits for providing a network for specifically PPLE alumni. As laid out above, PPLE stands out through its close-knit community of students. When striving to create a 'life-long' PPLE community, it is only reasonable to create a special alumni network dedicated for students of PPLE college. Furthermore, through the interdisciplinary itinerary that PPLE students have chosen, it makes sense to engage directly with other students of the same background.

# 2.

# Structure Overview

## ORGANOGRAM OF THE STRUCTURE



## **I ALUMNI NETWORK BOARD (ANB)**

The Alumni Network Board (ANB) would be in charge of overseeing the Alumni Network and its administration. It would include three members - the External Commissioner of the AIM Board, a student representative, and a general PPLE student. This arrangement would allow to best represent the interests of the PPLE community as a whole; it allows to have a PPLE alumnus/alumna or a current student, a person of the AIM Board (who will be in direct contact with the AIM Alumni Committee and could communicate necessary information efficiently), and a student representative from outside of AIM. The Alumni Network Board would be responsible for the creation of an online network for all PPLE Alumni and facilitate the growth of the community. Therefore, their role would be to set a solid foundation for the structure of the Alumni Network, coordinate PPLE-Alumni-only related activities, and provide guidance to involved parties on the needs of the newly established community.

## **I ESTABLISHMENT AS AIM BODY**

The introduction and integration of a new AIM Body is by no means a rarity in AIM, considering it is still a relatively new Association that is exploring new ways to grow each year. AIM has successfully introduced different functions and processes over the past years of its existence, and has more recently been able to smoothly merge AIM Committees or create and introduce entirely new ones in a relatively short period of time. The functions of AIM are guided by its Statutes and Bylaws. The Statutes are encompassed in a legal document, governing the broader principles and processes by which AIM shall function. The Bylaws are a supplementary document, encompassing AIM custom or soft-law, which further specify AIM activities and can be changed at any point in time by vote at an AIM General Assembly. Currently, the Bylaws include specification of each AIM Body and AIM Committee, including their responsibilities and goals. The introduction and transparent set-up of the Alumni Network would therefore be paired with the Network's implementation into the Bylaws via amendment at the AIM General Assembly. The said amendment is listed in the appendix.

## **I JUSTIFICATION OF ANB SET-UP**

The Alumni Network Board would be established as an AIM Body due to the close relation between AIM and PPLE students, and the high variety of projects AIM undertakes. Moreover, the flexible structure of AIM is ideal for such structural additions, while maintaining the integrity of the Association. The Alumni Network Board would comprise the External Commissioner of the AIM Board, a student representative proposed by the FSR-FDR, and a general (past) PPLE student. As indicated above, this arrangement is designed to represent different interests within the student body. A significant aspect of this combination of members is that not all must be AIM members - a requirement that is present for members of the AIM Board and AIM Committees. However, this is common practice within AIM Bodies: the existing Advisory Board, Treasury Advisory Board, and Application Committee composition of members is not limited to AIM members for the similar goal of providing a balance of expertise, interests, and insight. Therefore, this arrangement of Alumni Network Board members secures the aim of representing PPLE Alumni by making it accessible and adaptable beyond the AIM community.

## **I AIM ALUMNI COMMITTEE**

The AIM Alumni Committee functions like a regular AIM committee and is composed of the regular five positions (Chair, Secretary, Treasurer, Marketing Officer, External). The Committee organises predominantly social Alumni network events such as Alumni Borrels, informational evenings or events, and ongoing projects. The Committee's mission is to sustain and deepen the PPLE community beyond the end of the programme. It should offer opportunities for Alumni to connect in a more social setting, by utilizing the Network established by the Alumni Network Board. Moreover, the Committee reports to the Alumni Network Board and is overseen by it.

## **I PREPARATORY GROUP (Temporary)**

The Preparatory Group will operate until the instalment of the first Alumni Network Board in October. Their main task is to initiate the process of establishing the Online Alumni Network in coordination with the PPLE administration. With their work, they prepare a smooth transition into the instalment of the first Alumni Network Board. As the creation of the Alumni Network coincides with the instalment of the new AIM Board and FSR, the Preparatory Group will keep the new AIM Board and FSR up to date in order to ensure a smooth transition.



# 3.

# Timeline

2021

**Beginning April**

Start of Alumni Network Initiative

**April 14th**

FSR-FDR unanimously approves the initiative

**May 31st**

Proposal send out to stakeholders

**June 14th**

AIM General Assembly:

- voting on Amendments
- installment of temporary Preparatory Group

**October**

AIM General Assembly:

- Installment of first Alumni Network Board
- Installment AIM Alumni Committee

PREP. GROUP

1ST AIM ALUMNI COMMITTEE

1ST ALUMNI NETWORK BOARD

## BOARD TASK - REPRESENTATION

### Article 10.

#### 8. Alumni Network Board

1. The Alumni Network Board (ANB) is responsible with the facilitation and coordination of the AIM Alumni Network.
2. The ANB is composed of at least three members, whereby:
  - a. One member is the External Commissioner of the AIM Board;
  - b. One member acts as a PPLE student representative of the PPLE program, as proposed by the FSR-FDR;
  - c. One member with PPLE experience.
3. The ANB is elected at the Year Assembly by the GA.
4. The set-up of the Alumni Network will be conducted by a Preparatory Group composed of two current AIM Board members and one member of Student Council. The Preparatory Group's mandate will automatically end upon the instalment of the ANB at the Year Assembly.
5. In case of early dismissal of an ANB member, the Board will install a new member.
6. The ANB decides its own course of action, in accordance with what is written within the AIM Statutes and Bylaws, and in accordance with University of Amsterdam policy.
7. The ANB reports to the GA about its general course of action in order to ensure transparency in its functions.

*Note: section 8(b)(ii) is dedicated to members of the FSR-FDR or the PPLE Program Committee, but not specified as such in the AIM Bylaws in order to allow a margin of flexibility.*

*The contents of this amendment are subject to negotiation and change up until May 31st, by which the Amendment must be made publicly available to all AIM members for review. The predicted date at which this Amendment would take effect is June 14th, 2021, by vote at the AIM General Assembly. The Amendment procedure is guided by the AIM Statutes and Bylaws.*