

HI!!

CLASS OF '26



Welcome to PPLE!

We hope you are looking forward to the next three years as much as we are.

AIM is PPLE's official study association entirely run by its members - students like **you**.

Our main focus is to enhance the student life of all PPLE students by fostering an **open-minded community** and serving the interests of our student body. We do this by actively organising social and academic events throughout the year and providing our members with **unique opportunities** to explore the city of Amsterdam and advance their career and academic interests.

We strongly believe that AIM is not only **essential** to PPLE student life but also presents the best chances for PPLE students to prosper outside of the classroom. Every AIM member is encouraged to join one of our eleven **Committees** - the heart of our association. Divided into Social and Study, each Committee follows one specific theme and organises **many fun events** respectively.



AIM ROOM

This is the AIM room, a wonderful hangout spot for **all AIM members**. It is located left of the education desk in the PPLE building.

If you want to reach out to Board members or other PPLE students, this is the place to go. Next to being the perfect spot to socialise it is also where you can properly voice your ideas/feedback about AIM.

We would love to meet you there!

Opening Hours:
Mo-Fr from 11-17

Members

All PPLE students are encouraged to become AIM Members. They are the heart of our association and the reason for AIM's existence. Next to discounts on various events and activities in- and outside of PPLE, our Members can also directly participate in AIM's decision-making process at our General Assemblies.

AIM Board

A group of 7 representatives approved by the AIM Members. They are the ones who appoint Committee Members and also run the association in the background. Feel free to approach them whenever you have any questions about PPLE

Presidium

Made up of two elected members, the Presidium makes sure the Board follows AIM's bylaws.

Committee Members

Every AIM Member who wants to contribute to the PPLE community, be the mastermind behind one of our many events, or simply gain valuable work experience can join one of AIM's Committees. Most Committees are chosen in September and are usually comprised of five members, each holding a different position.

AIM Sports Teams

This year, there are three AIM Sports Teams our Members can join no matter their experience in the respective sport. Practice dates can be found on our website as well as in every Team's Whatsapp groupchat. If you feel like there is high demand for a particular Sports Team that doesn't exist yet, you can always come to the AIM Board and discuss the possibilities of founding a new one.

How to Join:

Want to become an AIM Member?

Becoming a Member unlocks an unmatched social community and offers you discounts for most AIM events. As a Member you can also look forward to other perks such as being able to vote on AIM matters at our General Assemblies and exclusive discounts on events outside of PPLE.

How?

1. Scan the QR code
2. Pay the small fee



Why get involved

AIM PPLE offers unique social events that allow you to connect with fellow students who will be a significant part of your university life. By participating in AIM events, you can **network, socialize, and grow as both a student and an individual**. Additionally, you'll have the rare opportunity to form close bonds with your fellow PPLE students amid the bustling university environment.

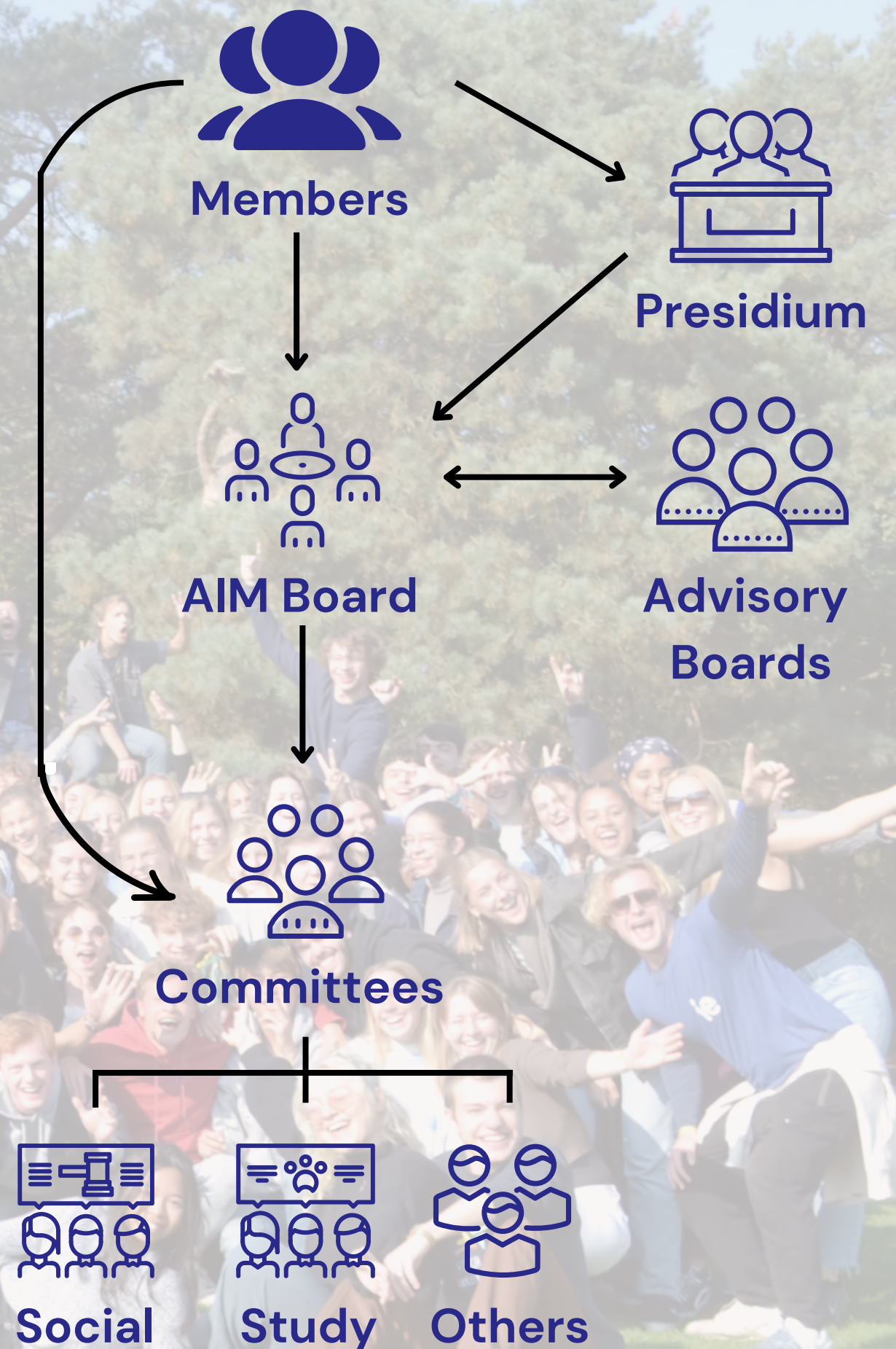
Becoming an active committee member will give you the opportunity to develop **organizational and leadership skills** while also being able to turn your ideas into AIM events. From Social Committees like Freshmen Weekend and Party to academic events like MUN and Pride Borrels, AIM offers leadership opportunities tailored to the interests and passions of many PPLE students.



Structure

AIM is an inclusive community and **everyone is welcome to join**. As a Member you'll have the chance to apply to one of our many Committees and run for our Board and Presidium - AIM bodies that are both voted in by our Members.

The Advisory Board is chosen by the Board. Their purpose: to advise the Board on all different matters. Every Committee is assigned to one of two categories - Social or Study - both of which are directly overseen by the Board. The AMS UNLOCKED and SpringBoard Committees are the exception to that rule.



General Assemblies

AIM's General Assemblies are a triennial event where the Board presents its plans for the next semester and/or school year, budget realisations, and a other administrative obligations. It's also the event where **Members get to nominate, vote on and inaugurate the next AIM Board and Advisory Boards, as well as elect the Presidium.**

General Assemblies are where you can to hold the Board and AIM in general accountable for their actions. With open votes, we ensure that the direction AIM is taking is in line with your interests. And small tip: attending also gives you **free pizza** and free attendance to General Assembly Borrels ;)





COMMITTEES



How to Apply for a Committee

Step 1

Send in your Application
Mid September (Dates TBA)

Step 2

Get an interview

Step 3

Enjoy your time on one of
AIM's Committees!

Decision Day: Early October

Party

This committee organizes the biggest events of the year, with amazing parties and borrels to really get to know your fellow PPLE students and make the most out of time in Amsterdam. Last year's highlights include the Boat Party and the Spring Formal.

If organizing some of the most memorable events of your university life and gaining valuable event management skills sounds like something for you, don't miss your chance to apply for the Party Committee!



Sports

The sports committee aims to bridge the gap between parties and purely academic events by strengthening the PPLE community spirit. The committee creates fun and inclusive sports events for PPLE students to participate in with their friends and fellow students.

Do you want to connect your peers through fun competitions, share the joys of your favourite sport with your fellow students?
Then this is the right committee for you.

Buddy

The Buddy Committee plays an integral role in supporting freshmen in their integration into PPLE life. Managing the **AIM Buddy System**, it pairs first-years with upperclassmen and organizes various buddy events for PPLE students to grow closer. Last year's activities ranged from a painting event and karaoke to exclusive buddy borrels.

If you are interested in meeting students from other years and want to be the one behind creating lasting friendships, you're more than welcome to join this committee (no matter your year)!



Third-Year Weekend

Attention third-years: joining this committee will give you the chance to organize the perfect end to your time in PPLE. A weekend to party with the people you have gone through your Bachelor's together is bound to be fun – but you can be the one to make it truly unforgettable.

You can decide what games and challenges to put your peers through and organize the party of a lifetime. Joining the Third-Year Committee means making the best out of this final bonding moment and make your time in PPLE end with a blast.



Aimweek

Moving to a new place or starting university can be a big and scary step. PPLE's exclusive Intreeweek is here for freshmen to get introduced to Amsterdam or university life in a social and fun manner, with second- and third-years assigned to act as mentors for the new freshmen.

This committee organizes a week full of fun and bonding events and activities before the start of uni. Interested in organizing an unforgettable week? Then join this committee to be responsible for the amazing first impressions freshmen will get of AIM and PPLE.



Freshmen Weekend

The event which truly starts off your year at PPLE. If you ask almost any PPLE they will agree that Freshmen Weekend was one of the most memorable events of their first year as a PPLE student.

An opportunity to really get to know your fellow PPLE students and create lifelong relationships and memories. Joining this committee, you can make sure that the new first-years have a time as memorable and fun as you did, and gain experience organizing a large event. So what are you waiting for?

Academic

If you want to enhance PPLE students' academic career and promote personal growth outside the classroom, this is the perfect committee for you. Our Academic Committee encourages all kinds of talent to flourish and skills to develop. From literary festivals and mock debates, to panel discussions and interviews – the possibilities for fun academic events seem almost endless. Joining the Academic Committee will provide you lots of chances to broaden the PPLE curriculum with topics you are passionate for and satisfy your own curiosity.



Awareness

Is there something you've always wanted to raise awareness for but lacked the platform? The Awareness Committee is here to assure socially relevant issues get their due spotlight in our community. This is done by regularly discussing important topics on the AIM for Change Podcast and organizing inclusive events like the Pride Borrell last year. Everyone is invited to help and foster positive change – join this committee if you're serious about improving our community for the better.



Arts

The Arts Committee organizes all kinds of art-related events, from visiting one of Amsterdam's many museums and arranging workshop for PPLE students to hone their artistry to setting up exhibitions in the PPLE building and running art competitions.

Don't worry: artistic talent isn't required to participate in any of the events nor is it needed to join this committee. Everyone is welcome to enjoy the beauty of art – and if you want to be the one encouraging your fellow students' artistry, this is the committee for you.



MUN

Diplomacy, public speaking and debates are your thing? Then welcome to the MUN Committee (Model United Nations). This team's activities are mainly centered around and leading towards one big event at the end of the year: the DamMun Conference, a simulation of a UN conference with participants from all over the Netherlands.

If the idea of facilitating this academic exchange excites you and you want to flex (or develop) your organizational skills in PPLE, don't hesitate to join the MUN Committee!

Yearbook

Are you a third-year who also feels kinda sad graduating so soon? Don't worry, the Yearbook Committee is here to cover you. This cool group of people plans, designs and writes this year's yearbook.

They say that you're the author of your story, but you could also be the person writing the one physical memento people will be able to use to someday reminisce and smile about their time in PPLE. Capture those bittersweet memories in an album that's sure to touch the soon-to-be-alumis' hearts.

Make use of this chance to bring all of the third-years together to assure nothing's left unsaid, every PPLE joke told and every adventure you've experienced immortalized on paper. Regardless of your year, don't leave the Class of '23 hanging and join the Yearbook Committee to make someone's day.



AMS UNLOCKED

AMS UNLOCKED is the by far biggest ever student party in Amsterdam. In October 2021, the AIM Party Committee came up with the idea to team up with JFAS, Sefa, VSPA and SES – four other local study associations – to create AMS Unlocked: a music festival for over 1500 students at the legendary Thuishaven to end the school year with a blast. With a line-up of over 10 professional EDM, House and Techno DJs and two big stages, the event turned out to be a great success.

This year, another group of dedicated students is about to come together to make the next AMS Unlocked Festival even better. With them working hard under the AMS Unlocked banner, we hope that you're as excited as we are to see what they'll come up with and cannot wait to see all of you there!





WE CARE

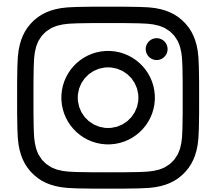
We care about the needs and interests of our members. If something is not right within the association **please speak up!**

Moreover, we understand how overwhelming the transition to university life may be, **we are here to help** and ensure this transition is as smooth as possible. As your study association, **we want to ensure that you feel included, welcome, and appreciated by the PPLE community.**

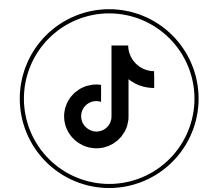
In order to voice your concerns, you can come let us know in person or use the contact us form on the AIM website. Any concerns that you are not comfortable bringing to the board can be directed to the advisory board (ab@aimpple.nl)

Contact us!

For any position related matters, you should contact the position emails (on the next slide). If you have any questions or concerns regarding our study association as a whole, please use the "contact us" form on the AIM website. Any concerns about the association that you don't want to bring to the Board can be directed to ab@aimpple.nl. If you are confused about who to contact, please ask any member of the AIM Board. We are more than happy to help! You can also always find us in the AIM room!



aim.pple



aimpple



aimpple



AIMStudyAssosiation




Room E1.16, Roeterstraat 11
1018WB, Amsterdam
The Netherlands

THE 10TH AIM BOARD



Ana-Caterina Ciusca – Chair

 @ana__caterina

 Chair@aimpple.nl



Dirk Koeleman – Internal Study

 @dirk.koeleman

 Internalstudy@aimpple.nl



Amelie Rust – Secretary

 @amelierust

 Secretary@aimpple.nl



Emma Weiss – External

 @emma.weiss

 External@aimpple.nl



Freya Banke-Wallis – Treasurer

 @freya.bankewallis

 Treasurer@aimpple.nl



Téa Forrest – Marketing Officer

 @tea_forrest

 Marketing@aimpple.nl



Marian Mahmoud – Internal Social

 @marianmhmd

 Internalsocial@aimpple.nl



AIM PPLE
STUDY ASSOCIATION